

SAFETY AND PROPER USAGE

To ensure safe and enduring performance of this product, you must comply strictly with the instructions enclosed herein. Non-compliance with instructions or improper handling of the product will void your warranty! Usage of this product in conditions not specified in this manual or in contrary to the instructions hereby provided is considered IMPROPER. The manufacturer will not be held liable for any damages resulting from improper use of the product.

SAFETY & WARNING INSTRUCTIONS

- Observe valid and generally accepted safety rules when planning, installing and using this product.
- Take proper measures to prevent unintentional operation of the product or damage to it.
- Do not attempt to disassemble this product or lines in the system while they are under pressure.
- Always depressurize the compressed air system before working on the system.

It is important that personnel use safe working practices and observe all regulations and legal requirements for safety when operating this product. When handling, operating or carrying out maintenance on this product, personnel must employ safe engineering practices and observe all local health & safety requirements & regulations. International users refer to regulations that prevail within the country of installation. Most accidents, which occur during the operation and maintenance of machinery, are the result of failure to observe basic safety rules or precautions. An accident can often be avoided by recognizing a situation that is potentially dangerous. Improper operation or maintenance of this product could be dangerous and result in an accident causing injury or death. The manufacturer cannot anticipate every possible circumstance, which may represent a potential hazard. The WARNINGS in this manual cover the most common potential hazards and are therefore not all-inclusive. If the user employs an operating procedure, an item of equipment or a method of working which is not specifically recommended by the manufacturer he must ensure that the product will not be damaged or made unsafe and that there is no risk to persons or property.

NEVER CHANGE ORIGINAL COMPONENTS WITH ALTERNATIVES

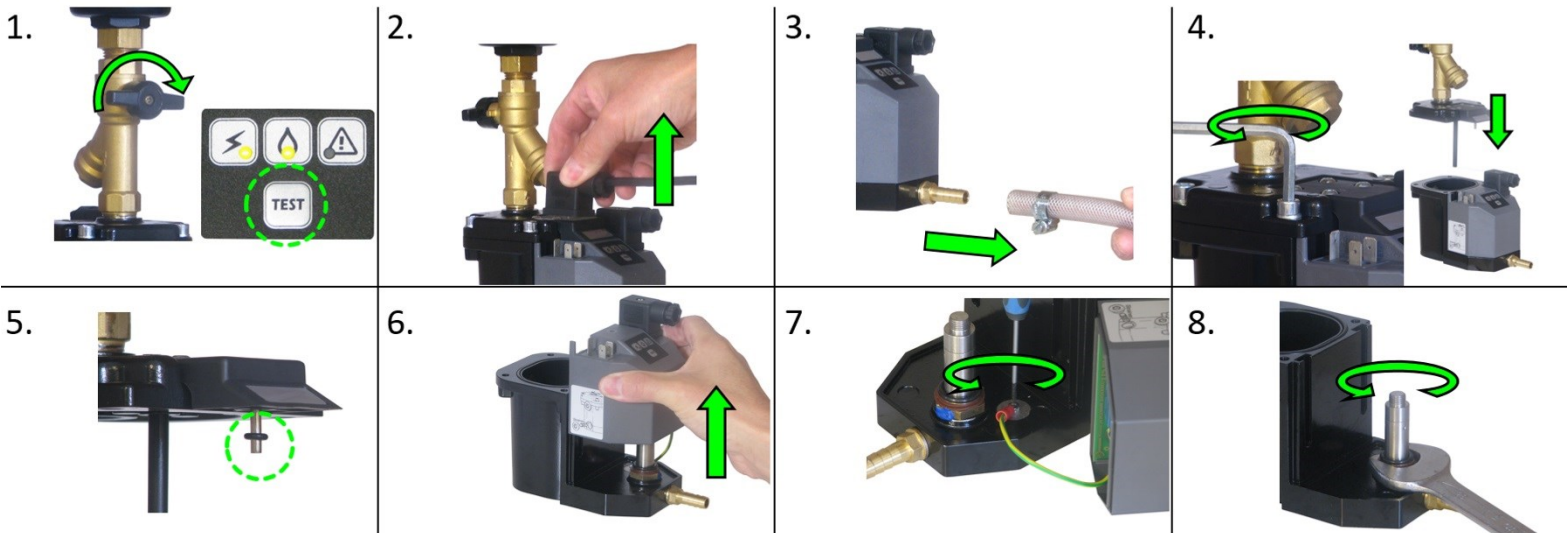
⚠ WARNING This product can expose you to chemicals including lead, which is known to the State of California to cause cancer and/or birth defects or other reproductive harm. For more information, go to www.P65Warnings.ca.gov



MAINTENANCE INSTRUCTIONS 1/2

Before using this product, make sure it complies with your request and that it suits your application!

1. Close the condensate supply. Press the TEST button to empty the unit of any residual condensate and to depressurize the drain.
2. Unscrew the connector screw(s) and remove the power cable, and optional alarm cable.
3. Remove the outlet hose.
4. Unscrew the four housing bolts, using a 5mm Allen key, and remove the bottom part of the housing.
5. Replace the small O-ring on the sensor module.
6. Slide the electronics module upwards away from the housing. *Make sure you don't damage the attached earthing cable.*
7. Unscrew the earthing cable screw and place the electronics module aside where it will not get wet/or damaged.
8. Unscrew the valve shaft using a 23mm wrench.

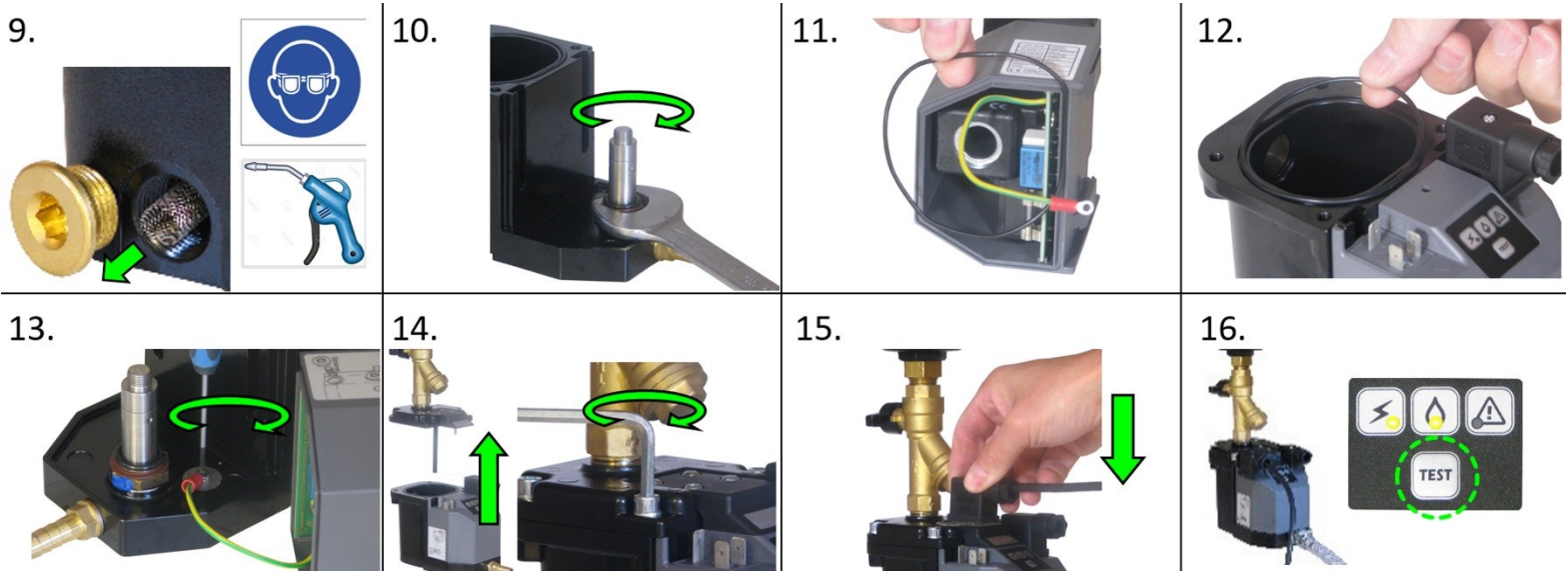


MAINTENANCE INSTRUCTIONS 2/2

9. Use a 10mm Allen key to remove the lower inlet plug and clean the mesh strainer.
10. Replace the strainer and plug and mount the new valve parts using a 23mm wrench.
11. Replace the electronics gasket under the electronics module by the one supplied in the service kit.
12. Replace the large housing O-ring with the one supplied in the service kit.
13. Replace and tighten the earth cable screw and slide the electronics compartment back on to the housing.
- *Make sure you do not damage the earthing cable!*
14. Replace the bottom part on to the top part of the housing and tighten the four housing bolts (max. torque 10Nm.)
15. Replace the outlet tube and connectors (max. torque 0,3Nm). *Make sure all gaskets are in place to ensure proper IP65 rating.*
16. Your drain is now ready for operation. Restore power and condensate supply and press the TEST button to check the valve function.

Note: Clean the strainer periodically to avoid possible blocking causes by rust and/or debris.

Note: Check the valve function periodically. A purging sound must be heard.



MAINTENANCE CHART

Date	Description	Name