

SOLAR
LIGHTS

SL-SMFL-10W-40K-BK-G1



NOTICE AND WARNING

1. THIS IS A SOLAR POWERED LAMP, PLEASE INSTALL IT IN A LOCATION WHERE IT CAN GET ENOUGH SUNSHINE.
2. PLEASE NOTE THE LIGHTING TIME DEPENDS ON SUNSHINE DURATION & WEATHER.
3. PLEASE DO NOT DISASSEMBLE THE LIGHT AS THIS WILL VOID THE WARRANTY.
4. THE LIGHT CONTAINS A LITHIUM BATTERY. PLEASE RECYCLE OR DISPOSE OF PROPERLY.
5. OVER TIME, BATTERY PERFORMANCE MAY DECLINE. THIS IS NORMAL FOR THIS TYPE OF PRODUCT AND IS NOT COVERED BY WARRANTY.

PLEASE SEE WEB SITE FOR MORE DETAILS

<https://solera-solar.com/>



SPECIFICATIONS

Product Name	Multifunctional Solar LED Flood Light With Double Side Solar Panel
Power/Lumen	10W/1100LM
LED Type	SMD2835*55PCS
Lithium Battery Pack	3.7V/7200mAh, replaceable
Solar Panel	6.5Wp+4.5Wp double side, Mono-Crystalline Silicon
Solar Panel Size	13.6 x 9.3 x 1.8 in.
Lamp Body Size	9.1 x 6.5 x 1.3 in.
Detection Angle/Area	120°/<18ft (PIR Sensor)
Beam Angle	90°
Charging Time	8hrs to fully charged (by solar/USB)
Working Time	6-30hrs, depends on selected work mode
IP Class	IP65
Wire Length	9ft 10 in.
Material	ABS+PC+Aluminum, Anti-UV
USB Output	5.0V/1.0A
DC-Micro Input	5.0V/1.0A
Working Temperature	-4°F to 140°F
Warranty	3 Year Limited Warranty

FEATURES



Solar & USB Chargeable



ZERO Electricity Cost



Light on/off Automatically



PIR Sensor



4 Working Modes



IP65 Waterproof



Power Bank

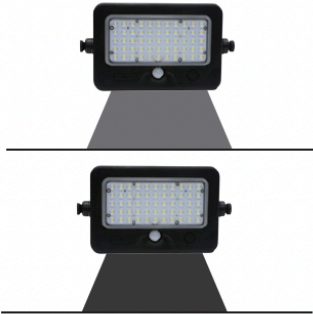


MODES

Once the lamp body is connected with the solar panel, the lamp will automatically recognize the Constant Lighting Mode, Sensor Mode or Power Bank function.

MODE A CONSTANT LIGHTING MODE (LAMP NOT CONNECTED WITH SOLAR PANEL)

Under this work mode, the PIR sensor & Photocell control will not work.



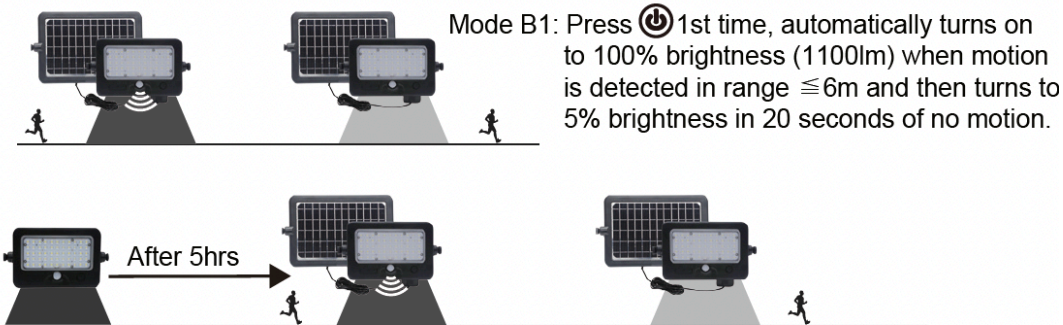
Mode A1: Press  1st time, it turns on to 30% constant brightness.


Mode A2: Press  2nd time, it turns on to 100% constant brightness.

Mode A3: Press  3rd time, it turns off.

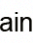
MODE B: SENSOR MODE (LAMP CONNECTED WITH SOLAR PANEL)

Under this work mode, the lamp will automatically light on at night, and light off at day time.



Mode B1: Press  1st time, automatically turns on to 100% brightness (1100lm) when motion is detected in range $\leq 6m$ and then turns to 5% brightness in 20 seconds of no motion.



Mode B2: Press  2nd time, automatically turns on & remain 100% brightness (1100lm) for 5hrs. After 5hrs or when battery capacity is less than 30%, it turns to Mode B1.

Mode B3: Press  3rd time, it turns off.

POWER BANK FUNCTION



USB Output: 5.0V/1.0A
DC-Micro Input: 5.0V/1.0A
Indicator of Battery Capacity:
25%, 50%, 75%, 100%.



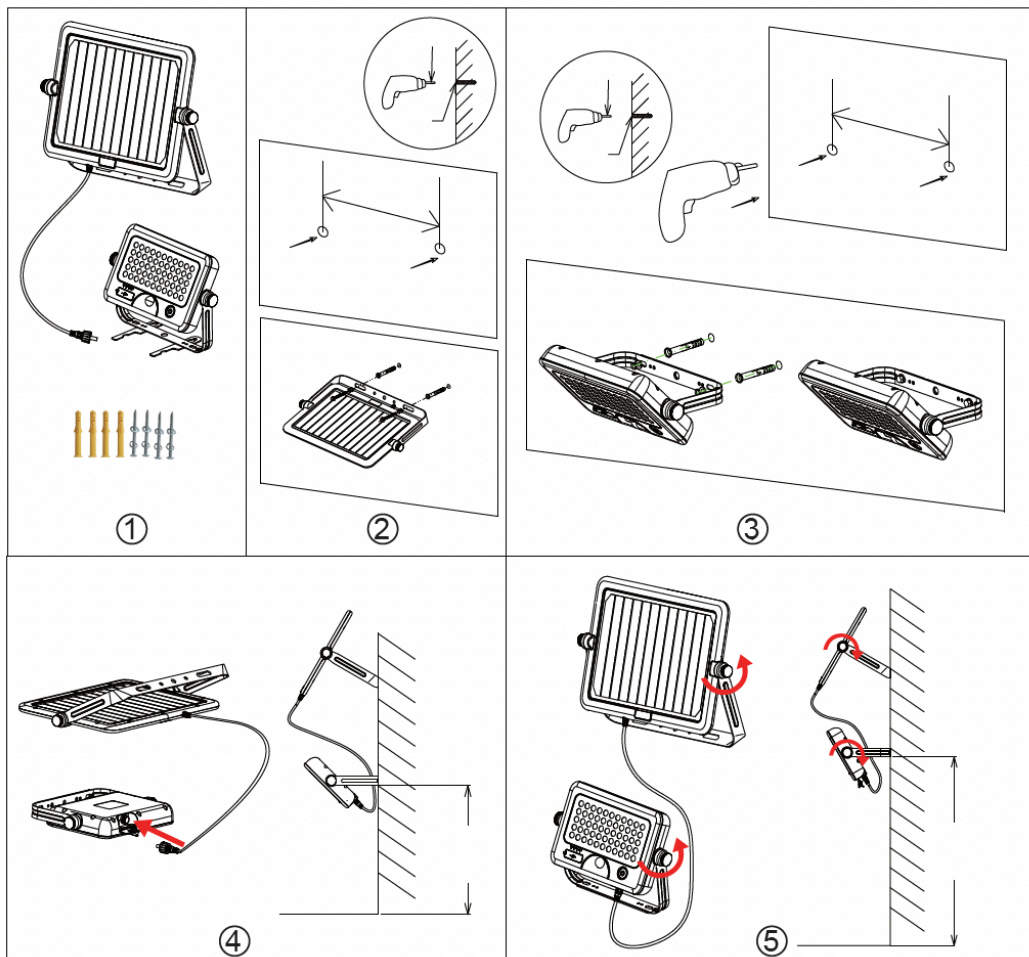
ON/OFF/Mode



INSTALLATION OPTIONS

INSTALLATION A: WALL MOUNTED

1. CHECK AND PREPARE LAMP, ACCESSORIES AND TOOLS WELL.
2. DRILL 2 HOLES WITH A DEPTH OF 2IN. AND A HOLE SPACING OF 6.6 IN., THEN FIX SOLAR PANEL ON THE WALL.
3. DRILL 2 HOLES OF 8MM WITH A DEPTH OF 2IN. AND A HOLE SPACING OF 5.2IN., THEN FIX LAMP ON THE WALL.
4. OPEN THE SILICON COVER AT THE BOTTOM OF LAMP, CONNECT THE WIRE OF SOLAR PANEL TO THE LAMP AND SCREW IT TIGHTLY.
5. ADJUST THE SOLAR PANEL AND LAMP TO THE RIGHT POSITION ACCORDING LOCAL LATITUDE AND LIGHTING DIRECTION, THEN TURN ON THE LAMP.

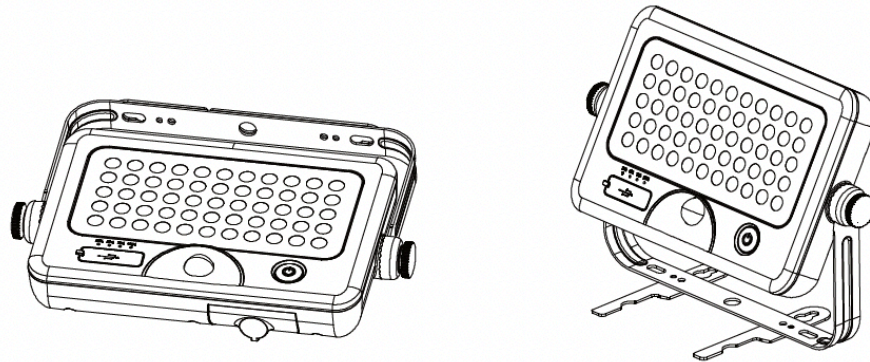




INSTALLATION OPTIONS (CONTINUED)

INSTALLATION B: PLACE ON A FLAT SURFACE

PUSH ASIDE THE STAND BRACKET AND PUT IT ON A FLAT SURFACE.



INSTALLATION C: WALL MOUNTED (LIGHT ENGINE ONLY)

1. PLEASE DRILL 2 HOLES ON THE WALL WITH A SPACING OF 3.48IN.
2. FIX THE EXPANSION PLUGS AND SCREWS INTO THE HOLES WITH A SPARE SPACE (DO NOT LOCK TO THE BOTTOM).
3. PUSH ASIDE THE STAND BRACKET, ALIGN THE HANGING HOLES TO THE SCREWS AND HANG THE LAMP ON THE WALL.

***THE RECOMMENDED INSTALLATION HEIGHT IS LESS THAN 6 FT.**

