

Applications

Industrial Machinery
Robotics
Commercial Wiring
Low Voltage Control System
Solar Industry

Specifications

Mechanical

Length: 6.299 in (160 mm)
Width: 5.905 in (150 mm)
Height: 2.559 in (65 mm)
Weight: 1.05 lb (479 g)
Material: ABS Base & Cover
Connection Capacity:
14 - 20 AWG(0.5 - 2.5mm²)
Wire Entry: Center Marks for Drilling
Entry Opening: 13/16 in (20mm)
Trade Size: 1/2 NPT
Neoprene Gasket In Cover
Mounting Hardware:
(2) PH - M4 x 30 with Hex Nut

Electrical

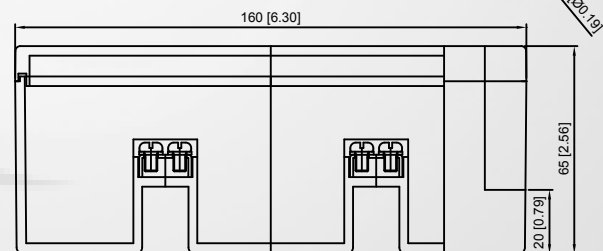
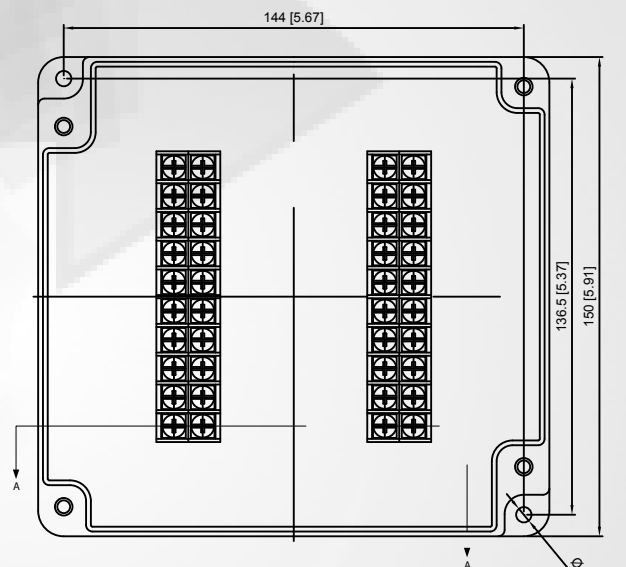
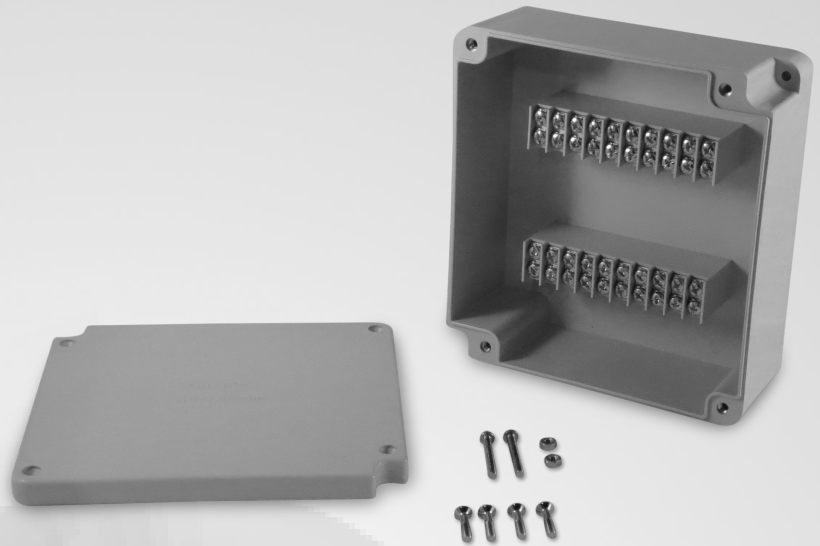
Input Current: 15 Amperes
Rated Frequency: 60 Hz
Rated Input Voltage: 120 Volts
#6 Screw Terminal
Terminations: 40 / Circuits: 20

Safety

Certifying Agency: TUV-SUD
Countries: Canada, USA
Standards: UL 508A

Ingress protection: IP65*

*When IP65 or Higher Rated Cable Gland is used



SECTION A - A
SHOWN WITH COVER

Compatible Accessory



SG-BB-15 (Blue)