



LIVC G2 LINEAR FIXTURE



↑
extra wide 6" width to
cover old footprint



flex[®]COLOR + flex[®]WATT

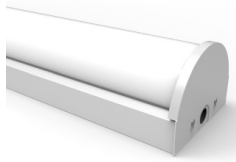
Eliminate ordering & stocking multiple wattages & color temps! 12 SKUs in 1. Can be in-field configured to 4 wattages & 3 color temps.

flex[®]CONTROL

Order without controls (control ready), or basic control (integrated bi-level energy saving sensor) or advanced controls.



JUNCTION BRACKET



SECURITY END CAP



MODERN2 END CAP

← flex[®]FIXTURE

Use this fixture in so many places! Multiple end cap trims available allow LIVC G2 to be used as stairwell, strip, vanity & continuous run fixture.



ALSO WORKS
ON 208V & 240V



BI-LEVEL ENERGY
SAVING SENSOR



EFFICACY



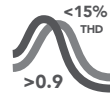
CRI



OPTIONAL EMG
BATTERY BACKUP



-4°F TO 140°F
OPERATING
TEMP



PWR FACTOR



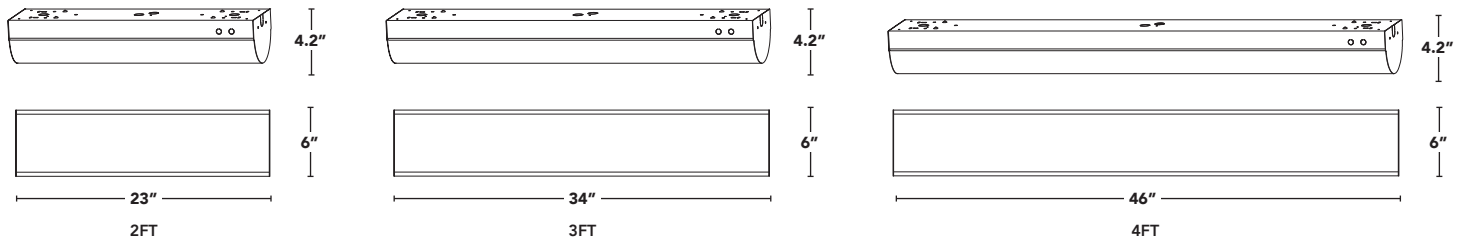
100,000hrs
RATED LIFE

PART #	UPC	FLEXWATTAGE	LUMENS	FLEXCOLOR
RPT-P-LIVC-G2-2FT-20L-840-FWFC-R-S1	844006010911	10W/ 15W /20W/30W	1240-3750	3000K/3500K/ 4000K
RPT-P-LIVC-G2-2FT-20L-840-FWFC-OCC-R-S1	844006010942	10W/ 15W /20W/30W	1240-3750	3000K/3500K/ 4000K
RPT-P-LIVC-G2-3FT-20L-840-FWFC-R-S1	844006010928	10W/ 15W /20W/30W	1240-3750	3000K/3500K/ 4000K
RPT-P-LIVC-G2-3FT-20L-840-FWFC-OCC-R-S1	844006010959	10W/ 15W /20W/30W	1240-3750	3000K/3500K/ 4000K
RPT-P-LIVC-G2-4FT-20L-840-FWFC-R-S1	844006010935	10W/ 15W /30W/40W	1365-5120	3000K/3500K/ 4000K
RPT-P-LIVC-G2-4FT-20L-840-FWFC-OCC-R-S1	844006010966	10W/ 15W /30W/40W	1365-5120	3000K/3500K/ 4000K

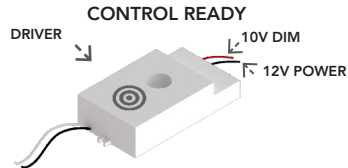




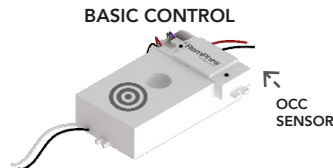
LIVC G2 LINEAR FIXTURE



CONTROL OPTIONS



All LIVC G2 models come standard as factory enabled to add controls at the factory, in the field or at a later date. Driver comes with 10V dimming and 12V DC power wiring.



Integrated high frequency, high/low motion and daylight hold-off sensor. Can be mounted behind glass or plastic lens. Default settings: SENSITIVITY: 100%, TIME DIM: 5MIN, TIME OFF = +∞ (dim but never off), PHOTOCELL: DISABLED, DIM LEVEL: 30%. Purchase optional remote control separately to adjust settings.

ORDERING CODES
SENSOR = OCC / REMOTE CONTROL = REMOTE-IR12

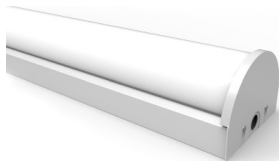
ADVANCED WIRELESS CONTROL



We partner with Magnum, avi-on, Philips, Lutron and other intelligent wireless lighting control systems. Allows for occupancy sensing, daylight harvesting, grouping, scheduling, high-end trim and more. Adjust settings via iPhone/Android apps. Contact us for more details.

CONTACT US FOR ORDERING CODES

ACCESSORIES



SECURITY END CAP

White metal end cap transforms LIVC into vandal & tamper resistant fixture.

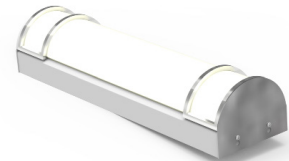
USES prisons, university dorms, apartment buildings
RPT-P-LIVC-G2-ENDCAP-SECURITY1



MODERN1 END CAP

Single bar brushed-nickel metal end cap creates a premium elegant look

USES hotels, high-end apartments, bathroom vanity
RPT-P-LIVC-G2-ENDCAP-MODERN1



MODERN2 END CAP

Double bar brushed-nickel metal end cap creates a premium elegant look

USES hotels, high-end apartments, bathroom vanity or mount fixture vertically for a beautiful wall sconce
RPT-P-LIVC-G2-ENDCAP-MODERN2



JUNCTION BRACKET

For professional looking continuous runs
RPT-P-LIVC-G2-JUNCTION-WHT



V-HOOK

Used to hang the LIVC from chain or cable (Includes 2 V-Hooks; chain/cable not included)
RPT-P-LIVC-G2-VHOOK-SET



LIVC G2 LINEAR FIXTURE

PART NUMBER BUILDER

MFR	CLASS	PRODUCT	GEN	SIZE	WATTAGE	COLOR	FUNCTION	OPTIONS	REF	AA
RPT	P	LIVC	G2				FWFC		R-S1	

Default setting shown in bold

2FT →	15L, 20L , 30L, 40L	830=3000K/85CRI	FWFC = FlexWatt + FlexColor	OCC = standard motion sensor OCCLR = limited range motion sensor OCCRF = simple grouping motion sensor EMG = 90min emg battery backup
3FT →	15L, 20L , 30L, 40L	835=3500K/85CRI		
4FT →	15L, 20L, 40L, 50L	840=4000K/85CRI		

BLANK = NON-BAA

ORDERING EXAMPLE

FIXTURE RPT-P-LIVC-G2-2FT-15L-840-FWFC-OCC-R-S1

DEFAULT LUMEN PACKAGE (WATTAGE AND CCT) ARE SHOWN BELOW IN BOLD. There are two ways to achieve a non-default lumen package and/or CCT -
1. You can easily adjust in field via our FlexWatt and FlexColor internal switches. **2.** Have us adjust the FlexWatt and FlexColor at the factory for an additional charge.



If you require BAA (ARRA Section 1605) add
-AA at end of part number.

For BAA projects, please contact our projects quotations team.

PART #	DLC CODE	STANDARD/PREMIUM	PRIMARY USE	COLOR TEMP	WATTAGE	DEFAULT LUMENS
RPT-P-LIVC-G2-2FT-15L-8XX-FWFC-[OCC,Blank]-[BAA,A,Blank]	S-Q517AX	Standard	Direct Linear Ambient Luminaires	30/35/40K	10/15/20/30W	1331
RPT-P-LIVC-G2-2FT-20L-8XX-FWFC-[OCC,Blank]-[BAA,A,Blank]	S-7NK9IP	Standard	Direct Linear Ambient Luminaires	30/35/40K	10/15/20/30W	1972
RPT-P-LIVC-G2-2FT-30L-8XX-FWFC-[OCC,Blank]-[BAA,A,Blank]	S-1MZWDE	Standard	Direct Linear Ambient Luminaires	30/35/40K	10/15/20/30W	2603
RPT-P-LIVC-G2-2FT-40L-8XX-FWFC-[OCC,Blank]-[BAA,A,Blank]	S-I3FMGT	Standard	Direct Linear Ambient Luminaires	30/35/40K	10/15/20/30W	3701
RPT-P-LIVC-G2-3FT-15L-8XX-FWFC-[OCC,Blank]-[BAA,A,Blank]	S-PNJIDE	Standard	Direct Linear Ambient Luminaires	30/35/40K	10/15/20/30W	1346
RPT-P-LIVC-G2-3FT-20L-8XX-FWFC-[OCC,Blank]-[BAA,A,Blank]	S-AEQK3J	Standard	Direct Linear Ambient Luminaires	30/35/40K	10/15/20/30W	1970
RPT-P-LIVC-G2-3FT-30L-8XX-FWFC-[OCC,Blank]-[BAA,A,Blank]	S-7UZ1FA	Standard	Direct Linear Ambient Luminaires	30/35/40K	10/15/20/30W	2625
RPT-P-LIVC-G2-3FT-40L-8XX-FWFC-[OCC,Blank]-[BAA,A,Blank]	S-3O5715	Standard	Direct Linear Ambient Luminaires	30/35/40K	10/15/20/30W	3623
RPT-P-LIVC-G2-4FT-15L-8XX-FWFC-[OCC,Blank]-[BAA,A,Blank]	S-RWJCP9	Standard	Direct Linear Ambient Luminaires	30/35/40K	10/15/30/40W	1384
RPT-P-LIVC-G2-4FT-20L-8XX-FWFC-[OCC,Blank]-[BAA,A,Blank]	S-GAV59B	Standard	Direct Linear Ambient Luminaires	30/35/40K	10/15/30/40W	1993
RPT-P-LIVC-G2-4FT-40L-8XX-FWFC-[OCC,Blank]-[BAA,A,Blank]	S-29MSDO	Standard	Direct Linear Ambient Luminaires	30/35/40K	10/15/30/40W	3934
RPT-P-LIVC-G2-4FT-50L-8XX-FWFC-[OCC,Blank]-[BAA,A,Blank]	S-4EUG3D	Standard	Direct Linear Ambient Luminaires	30/35/40K	10/15/30/40W	4999

PART #	DLC CODE	STANDARD/PREMIUM	PRIMARY USE	COLOR TEMP	WATTAGE	DEFAULT LUMENS
RPT-P-LIVC-G2-2FT-15L-8XX-FWFC-[OCC,Blank]-[BAA,A,Blank]	PKNN1ULV	Premium	Stairwell and Passageway Luminaires	30/35/40K	10/15/20/30W	1331
RPT-P-LIVC-G2-2FT-20L-8XX-FWFC-[OCC,Blank]-[BAA,A,Blank]	P9VXJ3DP	Premium	Stairwell and Passageway Luminaires	30/35/40K	10/15/20/30W	1972
RPT-P-LIVC-G2-2FT-30L-8XX-FWFC-[OCC,Blank]-[BAA,A,Blank]	PSKN3422	Premium	Stairwell and Passageway Luminaires	30/35/40K	10/15/20/30W	2603
RPT-P-LIVC-G2-2FT-40L-8XX-FWFC-[OCC,Blank]-[BAA,A,Blank]	PUW5V0H3	Premium	Stairwell and Passageway Luminaires	30/35/40K	10/15/20/30W	3701
RPT-P-LIVC-G2-3FT-15L-8XX-FWFC-[OCC,Blank]-[BAA,A,Blank]	P1WMOZAQ	Premium	Stairwell and Passageway Luminaires	30/35/40K	10/15/20/30W	1346
RPT-P-LIVC-G2-3FT-20L-8XX-FWFC-[OCC,Blank]-[BAA,A,Blank]	PKXHZT01	Premium	Stairwell and Passageway Luminaires	30/35/40K	10/15/20/30W	1970
RPT-P-LIVC-G2-3FT-30L-8XX-FWFC-[OCC,Blank]-[BAA,A,Blank]	PQ4RBMK5	Premium	Stairwell and Passageway Luminaires	30/35/40K	10/15/20/30W	2625
RPT-P-LIVC-G2-3FT-40L-8XX-FWFC-[OCC,Blank]-[BAA,A,Blank]	PJM7TJJ6	Premium	Stairwell and Passageway Luminaires	30/35/40K	10/15/20/30W	3623
RPT-P-LIVC-G2-4FT-15L-8XX-FWFC-[OCC,Blank]-[BAA,A,Blank]	P3PV9FRP	Premium	Stairwell and Passageway Luminaires	30/35/40K	10/15/30/40W	1384
RPT-P-LIVC-G2-4FT-20L-8XX-FWFC-[OCC,Blank]-[BAA,A,Blank]	PQGE3JA6	Premium	Stairwell and Passageway Luminaires	30/35/40K	10/15/30/40W	1993
RPT-P-LIVC-G2-4FT-40L-8XX-FWFC-[OCC,Blank]-[BAA,A,Blank]	P1JATCDU	Premium	Stairwell and Passageway Luminaires	30/35/40K	10/15/30/40W	3934
RPT-P-LIVC-G2-4FT-50L-8XX-FWFC-[OCC,Blank]-[BAA,A,Blank]	PBFO9AQV	Premium	Stairwell and Passageway Luminaires	30/35/40K	10/15/30/40W	4999

Available from Major Electronix.com | sales@majorelectronix.com |
 800-966-2345 | www.productsforautomation.com

05.03.23 Information is subject to change without notice.



LIVC G2 LINEAR FIXTURE



HOW DOES IT WORK?

We custom designed our own LED driver in-house so that the driver operates at maximum efficiency at each wattage. Standard LED drivers would have reduced efficiency.

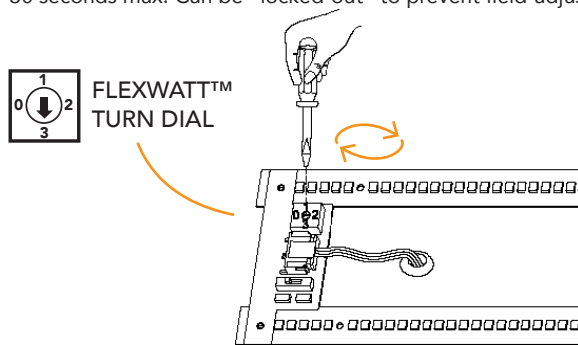
WHAT ARE THE WATTAGE CHOICES?

The 2ft, 3ft & 4ft length fixtures all have different wattage/lumen offerings. Please reference this table and the ordering guide on the last page of the cut sheet.

FLEXWATT TURN DIAL POSITION				
LENGTH	0	1	2	3
2FT	10W (1500LM)	15W (2000LM)	20W (3000LM)	30W (4000LM)
3FT	10W (1500LM)	15W (2000LM)	20W (3000LM)	30W (4000LM)
4FT	10W (1500LM)	15W (2000LM)	30W (4000LM)	40W (5000LM)

HOW EASY IS IT TO SET?

Simply open the fixture, and adjust the 4-position turn dial with a small, flat-head screw driver. Takes 30 seconds max. Can be "locked-out" to prevent field-adjustability if desired.



HOW DOES IT WORK?

We select the highest efficacy, multiple color LED diodes from quality suppliers, and mount them on the same circuit board. A proprietary LED binning process ensures color consistency between fixtures. The FlexColor technology controller ensures the correct color is selected, every time.

WHAT ARE THE COLOR CHOICES?

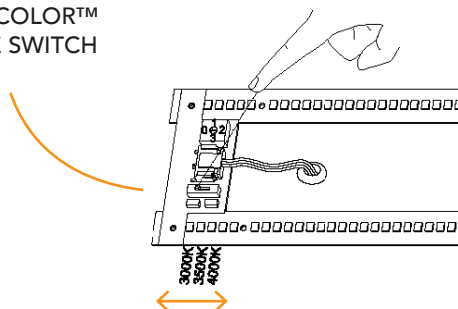
The 2ft, 3ft & 4ft length fixtures all have the same 3 choices for color temperature. 3000k, 3500k and 4000k. Please reference this table and the ordering guide on the last page of the cut sheet.

FLEXCOLOR SLIDE SWITCH POSITION			
LENGTH	TOP	MIDDLE	BOTTOM
2FT	3000K	3500K	4000K
3FT	3000K	3500K	4000K
4FT	3000K	3500K	4000K

HOW EASY IS IT TO SET?

Simply open the fixture, and adjust the 3-position slide switch with your fingers. Takes 30 seconds max. Can be "locked-out" to prevent field-adjustability if desired.

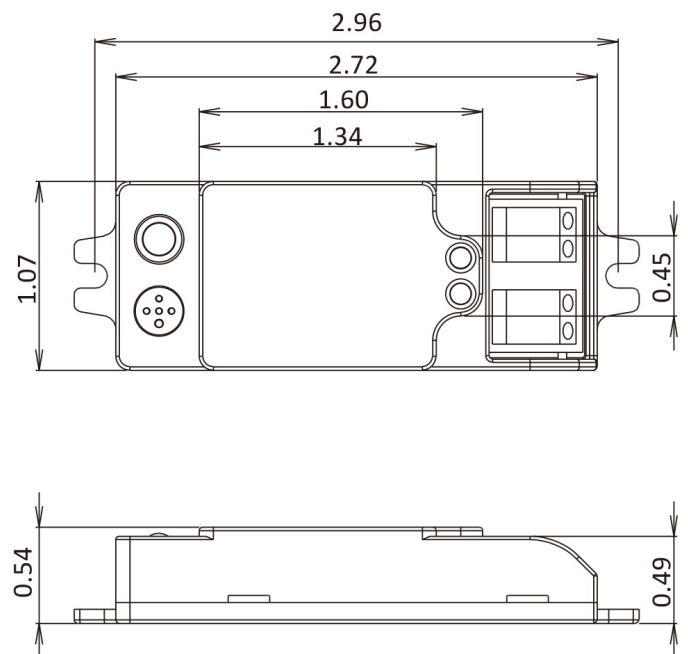
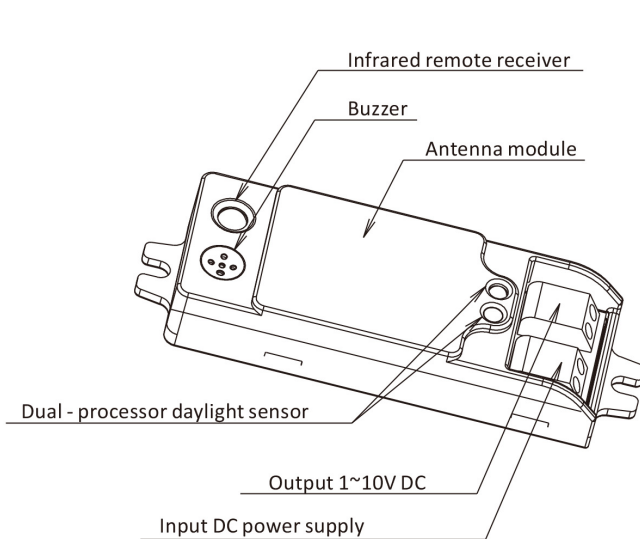
FLEXCOLOR™ SLIDE SWITCH





SENSOR OPTIONS: OCC / OCCLR

- > OCC - Standard high/low motion sensor.
Remote: IR12
- > OCCLR - Limited range high/low motion sensor.
Remote: IR12

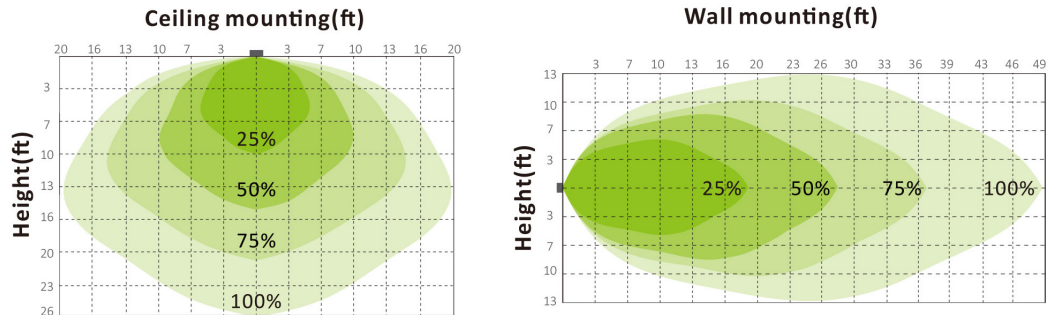


- > Occupancy sensor w/ daylight hold-off.
- > Powered by 12V DC LED driver from fixture - provided by the LED power supply.
- > High frequency radar occupancy sensor.
- > Infrared remote control available (sold separately).
- > Uses less than 0.1W in standby mode.

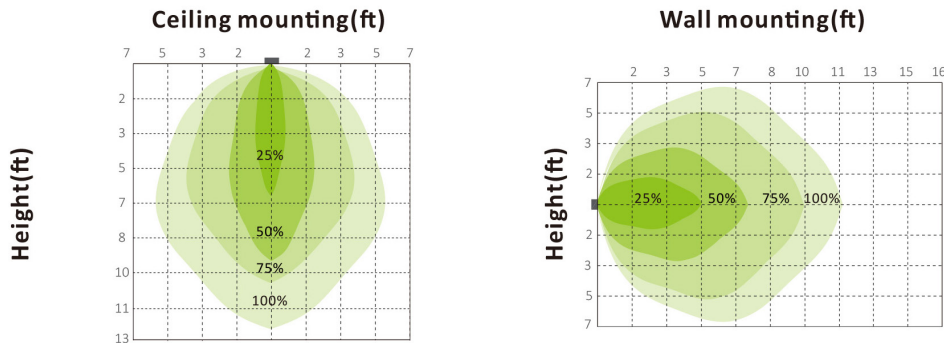


LIVC G2 LINEAR FIXTURE

DETECTION PATTERN OCC (STANDARD OPTION)



DETECTION PATTERN OCCLR (LIMITED RANGE)

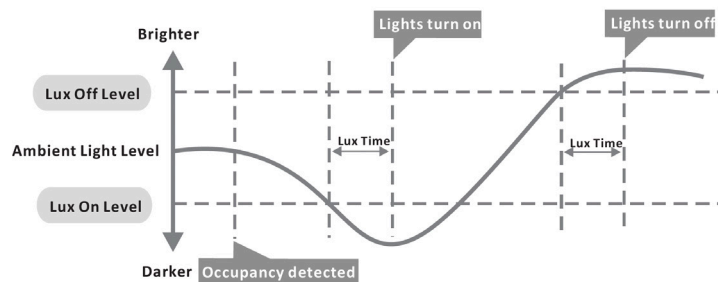


DAYLIGHT MONITORING FUNCTION

This sensor can tell the difference between natural light and artificial light (lamp) from behind the diffuser, switch on automatically (even without movements) when the ambient light is below the target value, and then switch off automatically whenever the artificial light is not required (ambient light is bright enough).

Note: Lux-Off sampling time - 30s; Lux-On sampling time - 10s

Lux-On function will only operate without motion when standby is set to + ∞.





LIVC G2 LINEAR FIXTURE

SENSOR OPTIONS: OCC / OCCLR



Permanent ON/OFF function

Press "POWER" button, sensor is disabled.

*press "Auto", "Reset" or "Ambient learn" to quit this mode.



Dim +/-

Press "Dim" button to automatically dim up or down the light brightness during hold-time from 10% to 100%. Another press to lock it down when desired brightness is achieved.

* after desired brightness is locked down, if user wants to dim again reversely, just press the "Dim" button again and then lock down the new brightness again.



Sensor mode

Press "Auto" button, the sensor starts to work and all settings remain the same as the latest status before the sensor was disabled.



Reset function

Press "Reset" button, all settings go back to factory default settings.

* Factory default settings--

Sensitivity=100%
Daylight sensor=disable
Hold time=5min
Twilight time=+∞
Twilight level=30%



Ambient learn

Press "Ambient learn" button, the latest surrounding lux value overwrites previous lux value learned, and set as the daylight threshold. This feature enables the fixture to function well in any real application circumstance.



Test mode

"Test mode" is for testing purpose only, for users to check the functionality and choose the desired detection range. The sensor goes to test mode automatically after pressing this button.

Users can quit this mode by pressing "ON/OFF", "Reset", or any button of "Hold time". The sensor settings are changed accordingly.

* Test mode defaulted settings--

Daylight sensor=disable
Hold time=3s
Twilight time=N/A
Twilight level=N/A



Note: IR12

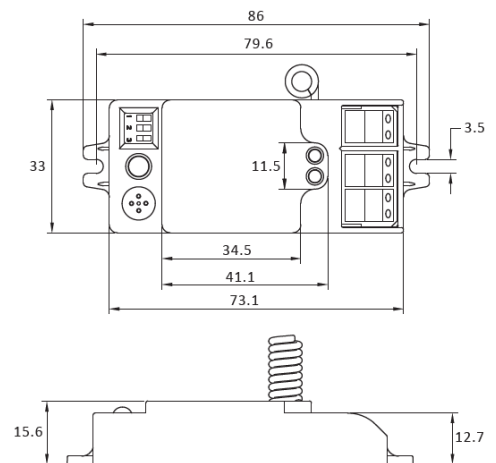
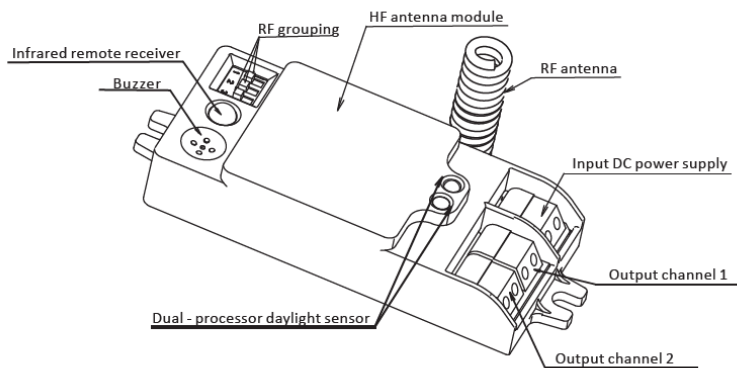
- The buzzer short beeps (~0.5s) ONCE when sensor successfully receives RC signal after pressing any buttons except for "Ambient learn".
- The buzzer short beeps (~0.5s) TWICE to start learning ambient lux after pressing "Ambient learn". Then followed by a long beep (~1s) to indicate the success of ambient learning.
- When "twilight level" set at 0%, it becomes ON/OFF control.



LIVC G2 LINEAR FIXTURE

SENSOR OPTIONS: OCCRF (SIMPLE GROUPING SENSOR)

- > OCCRF - Standard high/low motion sensor.
- Remote: IR13

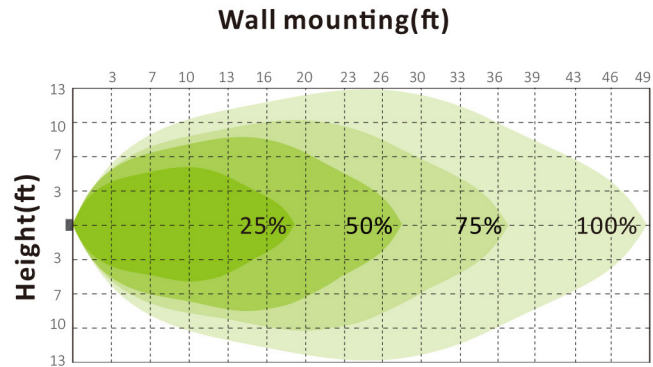
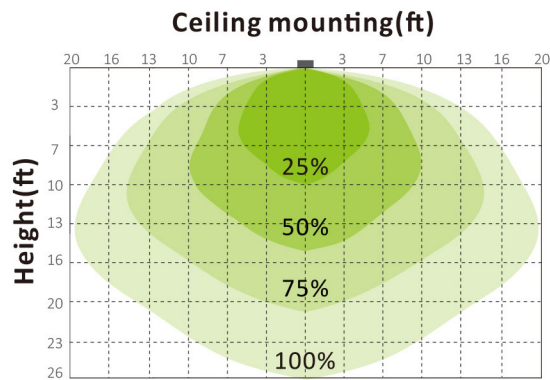


- > Simple grouping motion sensor w/ daylight hold-off.
- > Powered by 12V DC - provided by the LED power supply.
- > Max 150 ft. grouping range.
- > Ideal for stairways, parking garages & hallways.
- > Grouping by remote or dip switch (infrared remote control sold separately).
- > Uses less than 0.1W in standby mode.



LIVC G2 LINEAR FIXTURE

DETECTION PATTERN OCCRF

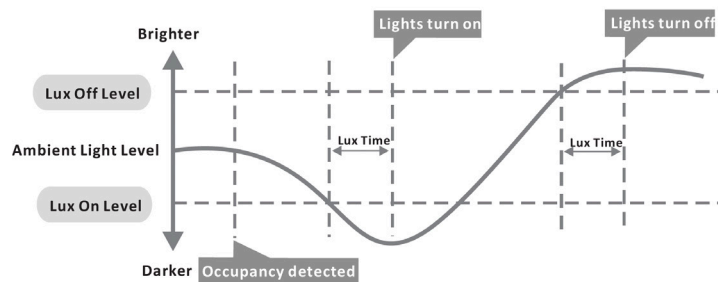


DAYLIGHT MONITORING FUNCTION

This sensor can tell the difference between natural light and artificial light (lamp) from behind the diffuser, switch on automatically (even without movements) when the ambient light is below the target value, and then switch off automatically whenever the artificial light is not required (ambient light is bright enough).

Note: Lux-Off sampling time - 30s; Lux-On sampling time - 10s

Lux-On function will only operate without motion when standby is set to $+\infty$.





LIVC G2 LINEAR FIXTURE

SENSOR OPTIONS: OCCRF (SIMPLE GROUPING SENSOR)



OCC OFF function

Press "OCC OFF" button, the motion sensor will be disabled.

*press "OCC ON", "Reset" or "Ambient" to re-activate the motion sensor.



Dim

Press "Dim" button to automatically dim up or down the light brightness during hold-time from 10% to 100%. Another press to lock it down when desired brightness is achieved.

*After desired brightness is locked down, if user wants to dim again reversely, just press the "Dim" button again and then lock down the new brightness again.



OCC ON function

Press "OCC ON" button, the sensor starts to work and all settings remain the same as the latest status before the light was switched on / off.



Reset function

Press "Reset" button, all sensor settings go back to factory default settings.

* Factory default setting:

Sensitivity=100%
Daylight sensor=disable
Hold time=90s
Twilight time=5min
Twilight level=10%
CCT=Neutral



Ambient learn

Press "Ambient learn" button, the latest surrounding lux value overwrites previous lux value learned, and set as the daylight threshold. This feature enables the fixture to function well in any real application circumstance.



Test mode

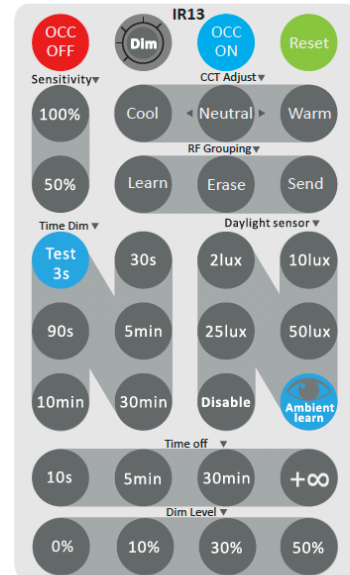
"Test mode" is for testing purpose only, for users to check the functionality and choose the desired detection range. The sensor goes to test mode automatically after pressing this button.

Users can quit this mode by pressing "ON/OFF", "Reset", or any button of "Hold time". The sensor settings are changed accordingly.

* Test mode defaulted settings--
Daylight sensor=disable
Hold time=3s
Twilight time=N/A
Twilight level=N/A

In this mode, when used for on/off control, after motion detected, sensor enters into a cycle of 3s on and 2s off.

In this mode, when used for tri-level dimming control, after motion detected, sensor enters into a cycle of 3s on and 2s off (0.5s soft off + 1.5s off).



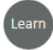
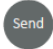
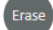
Note:

- The buzzer short beeps (~0.5s) ONCE when sensor successfully receives RC signal after pressing any buttons except for "Ambient learn".
- The buzzer short beeps (~0.5s) TWICE to start learning ambient lux after pressing "Ambient learn". Then followed by a long beep (~1s) to indicate the success of ambient learning.
- When "twilight level" set at 0%, it becomes ON/OFF control.
- Function zone of "CCT Adjust" is invalid for this model.



SENSOR OPTIONS: OCCRF (SIMPLE GROUPING SENSOR)

RF Grouping (via remote control)

-  Short press “Learn” button to the receiver unit to start grouping mode, the receiver unit will beep quickly (every second for 3min). This grouping mode will last for 3min, second short press on it will quit the grouping mode.
-  Short press “Send” button to the commander unit, it will beep once to start a 5s RF signal sending, and then beep twice to indicate finish of it. After receiving the RF signal, the receiver unit will beep 1s to indicate the success of grouping.
-  Long press “Erase” button for 5s to the sensor unit, it will long beep once, to indicate the success of erasing.

Note:

1. If you want the sensor to work as both commander and receiver , you need to repeat the “learn” and “send” process again with the identification exchanged.
2. Each receiver can learn up to max. 32 commanders, commanders added beyond 32pcs will automatically substitute earlier ones.
3. Before using the remote control for grouping, you have to position the grouping DIP switch at OFF - OFF - OFF. (default from factory)

Steps for grouping with remote control:

Step 1: Press “Learn” button on sensor A



Step 2: Press “Send” button on sensor B



Step 4: Press “Send” button on sensor A



Step 3: Press “Learn” button on sensor B

Fast RF Grouping (via DIP switch)

By simply selecting the same channel on each sensor unit, the grouping is quickly and automatically completed. Totally 7 channels are available for fast grouping.

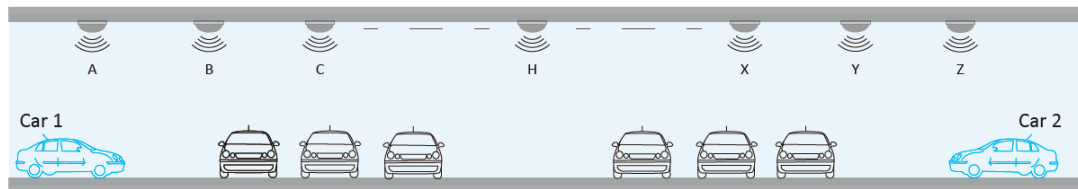
* Channel OFF - OFF - OFF is not for fast grouping, it is for remote control grouping only.



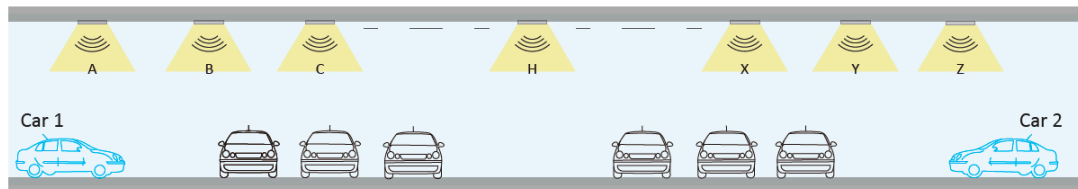
LIVC G2 LINEAR FIXTURE

SENSOR OPTIONS: OCCRF (SIMPLE GROUPING SENSOR)

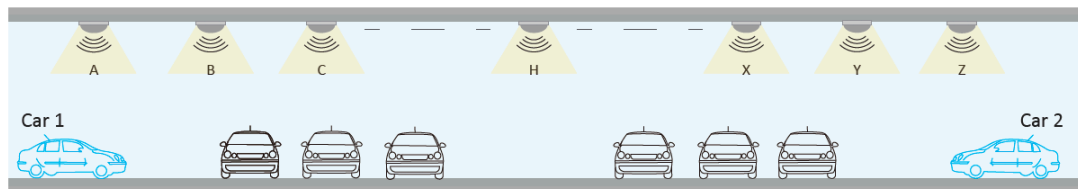
ILLUSTRATION FOR TYPICAL PARKING GARAGE APPLICATION



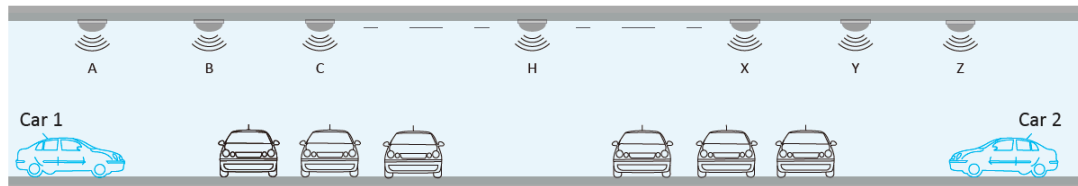
With sufficient daylight, sensor will not be triggered by motion, all lamps are off.



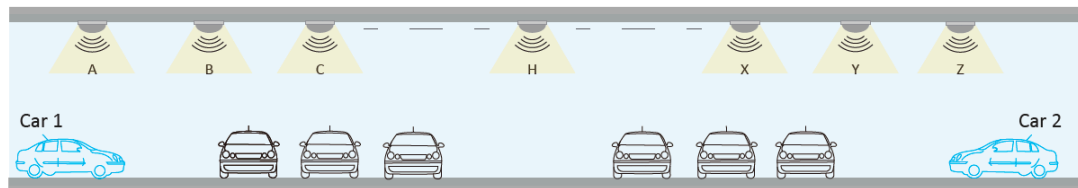
With insufficient natural light, either car 1 or car 2 enters the garage, sensor A or Z will be triggered on, and send RF signal simultaneously to all grouped sensors, all lamps will be 100% ON.



After the hold-time, the whole grouped lamps will dim to pre-defined dimming level (e.g., 10%) if no further movement detected.



The whole grouped lamps will switch off automatically after the stand-by period if no further movement detected.



Thanks to the daylight monitoring function, even no movement detected, the sensor will automatically switch on the lamp to pre-defined stand-by dimming level (e.g., 10%), as long as the natural light is below pre-defined lux threshold. (to achieve this unique function stand-by period of the sensor has to be set at $+\infty$).

*Note:

1. The RF transmission is a triggering signal only to activate the grouped sensors, each sensor will act based on their own settings.
2. Thanks to the Dual-processor technology, the built-in daylight sensor will shut off the lamp in real time regardless of any movements as long as the detected natural light is higher than pre-defined lux threshold.