

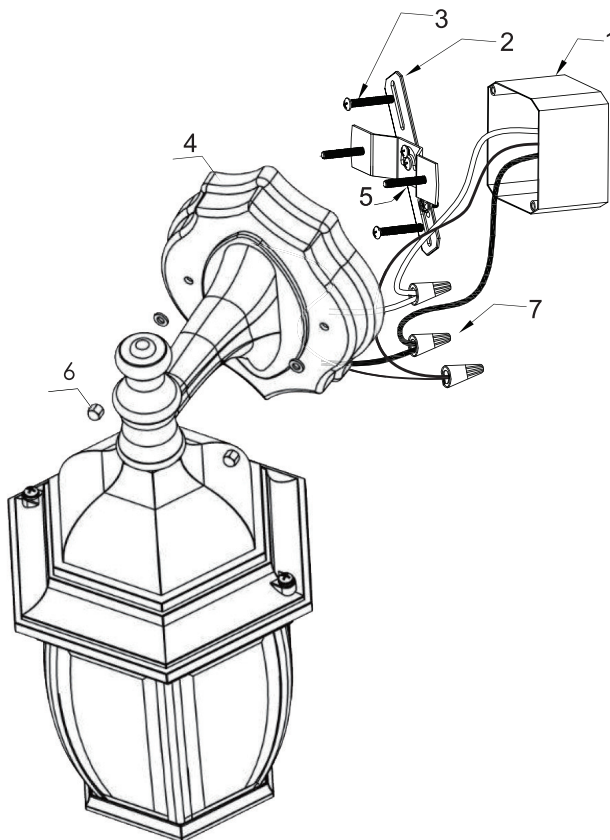
**PLEASE REVIEW THE INSTRUCTIONS AND WARNINGS LISTED BELOW PRIOR TO PROPER INSTALLATION**

### WARNINGS

- Risk of fire / electrical shock
- LED Fixture installation requires knowledge of luminaire electrical systems.
- Risk of electric shock – disconnect power at source before installation
- Do not make or alter any open holes in an enclosure of wiring or electrical components during installation.
- If lamp or luminaire exhibits abnormal operation (buzzing, flickering, minimal light, etc.), turn off power, remove fixture and contact us. For more information please visit [www.eurilighting.com](http://www.eurilighting.com) or call our toll-free number 1-888-743-5766.

### CAUTIONS

- Do not use with dimmers.
- Do not look directly at the operating LED Fixture.
- Do not touch this product with wet hands.
- Do not disassemble, repair or alter lamp.
- Designed for outdoor applications only.
- Suitable for wet locations.
- The luminaires shall be grounded.
- Be careful not to touch the lamp pins to the metal housing when installing.
- This Device is not intended for use with emergency exits or emergency lights.



### INSTALLATION INSTRUCTIONS

1. Install mounting plate to Junction Box.
2. Use wire cap(7) connect wire.
3. Insert screws(5) through holes on the backplate(4), tighten the screws nuts(6).
4. Done.