



LED DLC6C-18W103swej

Fixture Class: 6" Fixed Recessed



Product Description

The Euri Lighting LED 6" commercial downlight features two switches on the unit which allows for adjustment of the input power 7W/10W/18W, lumen output 700lm/1000lm/1500lm, and color temperature 3000K/3500K/4000K. This downlight is made for easy installation in new construction, remodel, and retrofit projects. Its 90+ CRI and frosted lens allow for true color rendering to bring out vivid colors throughout, and glare-free lighting making it ideal for commercial use in retail spaces, hospitals, offices, and airports. Features include: 0-10V dimming, 3CCT selectable, 3 Wattage Selectable, wet rated, JA8, IC Rated, and Energy Star.

*Available accessories include a 6" goof ring and mounting plate.



Estimated Energy Cost: \$0.84 per year
\$1.20 per year
\$2.17 per year

*Note: Design, features and specifications subject to change without notice. Some features may not be available on all models. Please visit www.eurilighting.com or call 1-310-787-1100 for more information.

Specifications

Input Power	Input Voltage	Lumen Output	Beam Angle	Center Beam	CCT
18 W	AC120-277V	1500 lm	90°	N/A	4000K

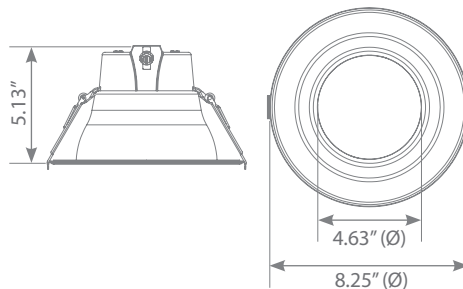
CRI	Luminous Efficacy	Power Factor	Input Current	Base	Lamp Lifespan
90+	96 lm/W	0.9	0.15-0.04 A	Wire	50,000 Hrs.

Phases	Input Power	CCT	Lumen Output	Luminous Efficacy	Estimated Yearly Cost
Phase 1	7 W	3000K	700 lm	96 lm/W	\$ 0.84
Phase 2	10 W	3500K	1000 lm	96 lm/W	\$ 1.20
Phase 3	18 W	4000K	1500 lm	96 lm/W	\$ 2.17

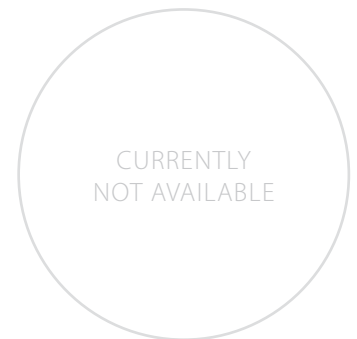
Product Features

- 0-10V Dimmable
- Energy Efficient
- 3CCT Selectable
- Wet Rated
- IC RATED Abutted & Covered

Product Dimensions



Product Photometric Data



Euri Lighting | A Division of IRTRONIX Inc.

©2019 Euri Lighting. All Rights Reserved

Available from Major Electronix | sales@majorelectronix.com | 800-966-2345 | www.productsforautomation.com