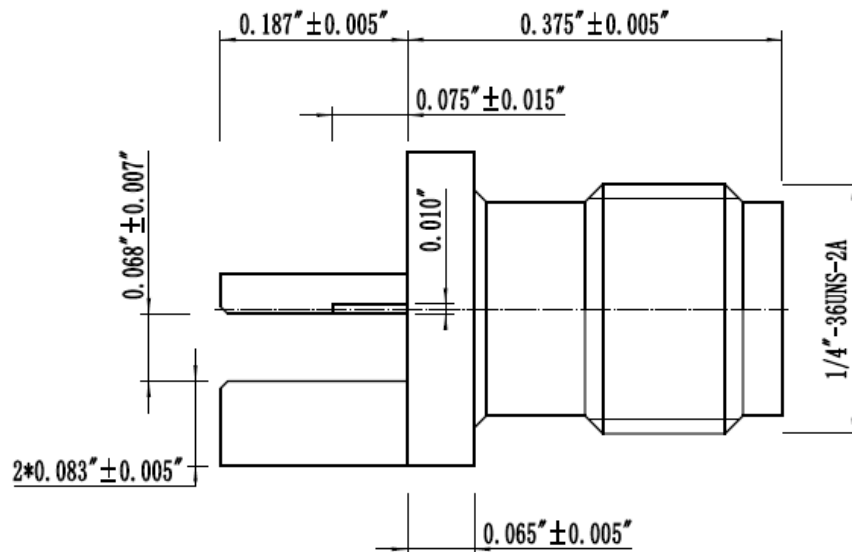
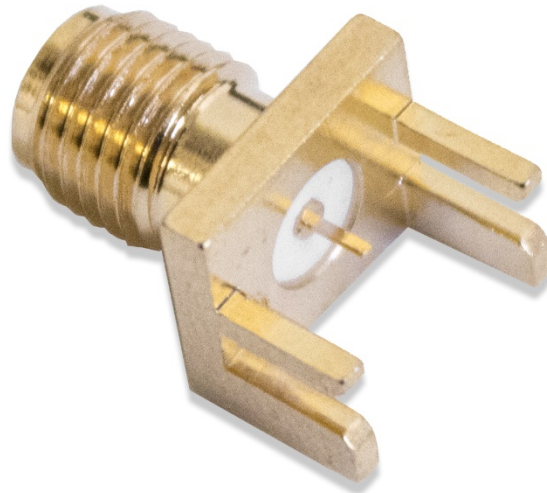
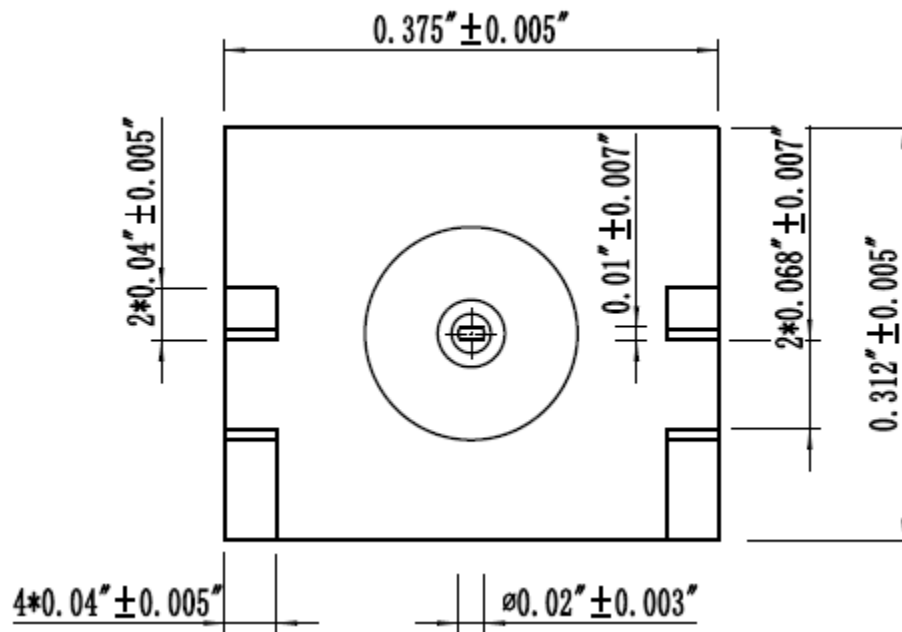


BU-1420701851

(Low Loss PCB Edge Mount SMA Jack with Rectangular Contact)





(Dimensions in Inches)

- Low VSWR Board edge, end launch mounting
- Designed to mount on .062" (1.57mm) Circuit Boards.
- Impedance: 50 Ω
- Frequency: DC to 18 Ghz.
- VSWR: 1.35 @ 10 Ghz. With LMR-100 cable
- Working Voltage: 335 VRMS Max
- Dielectric Withstand: 1000 VRMS
- Contact Resistance: 3 milliohms
- Insertion Loss: .18 dB Maximum
- Mating Cycles: 500 Minimum
- Meets or exceeds the applicable paragraph of MIL-C-39012
- Operating Temperature: -65°C to 150°C
- RoHS 3 Compliant