



READ ALL WARNINGS AND INSTRUCTIONS PRIOR TO INSTALLING THE KOBI LED FLUSH MOUNT TO ENSURE SAFETY AND PROPER OPERATION

DO NOT make or alter any open holes in an enclosure of wiring or electrical components during fixture installation.

DO NOT install damaged product. This luminaire has been properly packed so that no parts should have been damaged during transit. Inspect before installation.

DO NOT exceed maximum wattage marked on luminaire.

WARNING - Risk of fire or electric shock. LED Flush mount installation requires knowledge of luminaires electrical systems. If not qualified, do not attempt installation. Contact a qualified electrician.

WARNING - To prevent wiring damage or abrasion, do not expose wiring to edges of sheet metal or other sharp objects.

WARNING - Verify that supply voltage is correct by comparing it with the luminaire label information.

WARNING - Make all electrical and grounded connections in accordance with the NEC and any applicable local code requirements.

CAUTION - RISK OF FIRE

***THIS PRODUCT MUST BE INSTALLED IN ACCORDANCE WITH THE APPLICABLE INSTALLATION CODE BY A PERSON FAMILIAR WITH THE CONSTRUCTION AND OPERATION OF THE PRODUCT AND THE HAZARDS INVOLVED**

ATTENTION - RISQUE D'INCENDIE

***CE PRODUIT DOIT ÊTRE INSTALLÉ SELON LE CODE D'INSTALLATION PERTINENT, PAR UNE PERSONNE QUI CONNAÎT BIEN LE PRODUIT ET SON FONCTIONNEMENT AINSI QUE LES RISQUES INHÉRENTS**

INSTALLATION INSTRUCTIONS



DANGER - RISK OF SHOCK

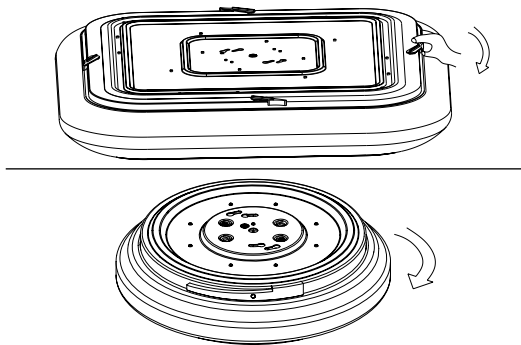
DISCONNECT POWER BEFORE INSTALLATION

This includes:

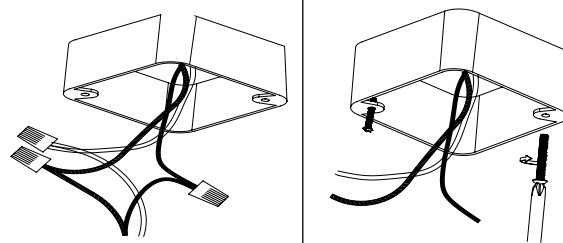
- 1 Kobi Electric LED Flush mount
- 1 Safety and Warning Label Sheet*
- 1 Installation Instruction Sheet

1. Turn off power at the source.
2. If there is an existing fixture remove it.
3. Remove the base from the lens by opening the 4 diffuser latches, or rotate the lens off of the base on the round flush mount. (Figure A)
4. Install the electrical box screws in the junction box. (Figure B)
5. Connect the input and ground wires of the driver to main power supply with appropriate wire connectors. (Figure B)
(Line)-Black (Neutral)-White (Ground)-Green
6. Put the fixture plate across the screws of the box, then rotate fixture plate clockwise and lock it. Tighten the screws down. (Figure C)
7. Reattach the lens of the fixture using the diffuser latches, or rotate the lens on to the base on the round flush mount. (Figure D)

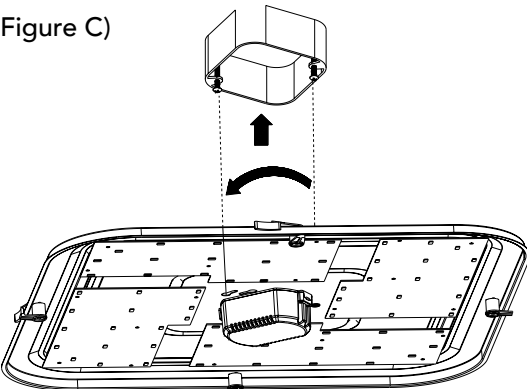
(Figure A) *SFXX-XX-DMV models used for example.
Instructions also apply to RF-XX-XX-DMV models.



(Figure B)



(Figure C)



(Figure D)

